



Factory

GUANGDONG SAKO NEW ENERGY CO.,LTD

Room 101,NO.1,2nd Street,shujiu Park,Changping Town, Dongguan City,Guangdong Province,China

+86-769-83986399

szsako@sako.com.cn

<http://www.sakopower.com/>

<https://sakosolar.en.alibaba.com/>

OFFICE

SHENZHEN SAKO SOLAR CO.,LTD

608 Building C, He-Xi HuangGangLing Industrial Park, Hangcheng Area, Taoyuan Community, Xixiang Baoan, Shenzhen,China

0075-27493766

szsako@sako.com.cn

<https://sakopower.en.alibaba.com/>

<https://tedepesolar.en.alibaba.com/>



太阳能锂电池储能系统 LITHIUM BATTERY STORAGE SOLAR SYSTEM



广东三科新能源有限公司
GUANGDONG SAKO NEW ENERGY CO.,LTD.



Are registered by SAKO company, no expiation or simulation is allowed.
All data, and other information listed here are subject to change without notice. Please kindly understand.

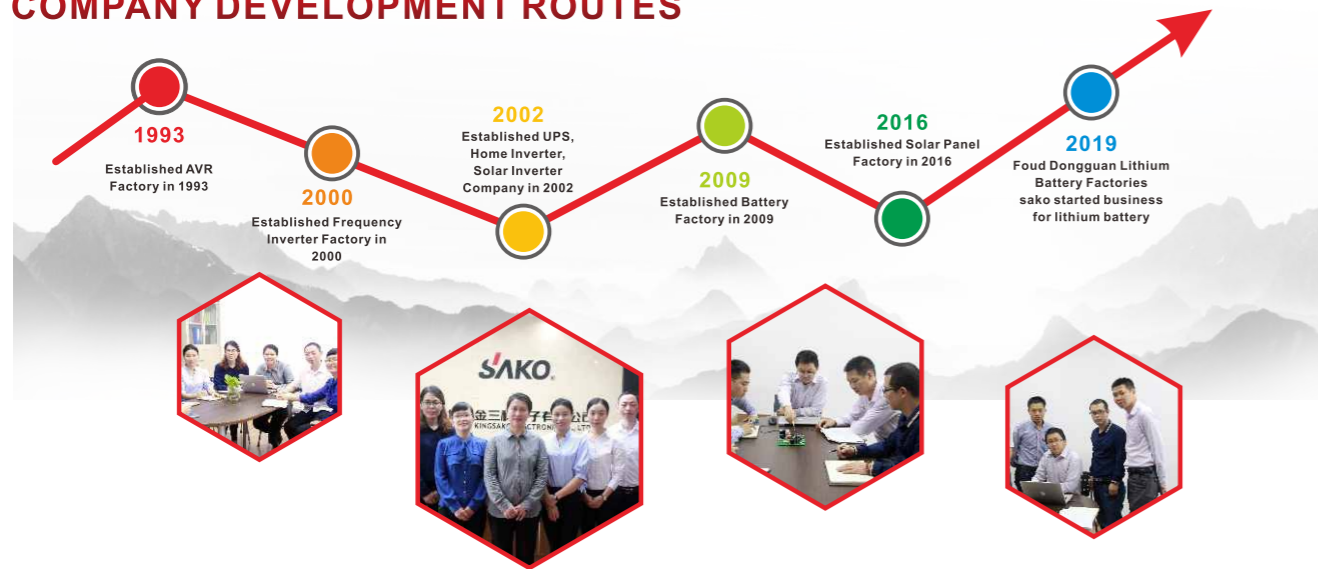


SAKO, The World Power Expert Since 1993.

Company Mission: Lighting Global, Powering Global
TRUSTED PARTNERSHIP WITH PROFESSIONAL TALENTS



COMPANY DEVELOPMENT ROUTES



About us

Leading OEM/ODM manufacturer for off grid solar inverter, home inverter, pumping inverter, lithium iron battery pack, solar panel, storage solar system.

Established in 1993, SAKO is the professional manufacturer engaged in research, development, sale and service of high quality power and solar products, with main products cover: home inverter, off grid solar inverter, solar panel, lithium iron battery pack and storage solar system. As we SAKO produce all key components of solar system by ourselves, we have the advantage on cost control and quality control. Customer can do one stop shopping from SAKO and we give the warranty to the whole system based on our rich experience.

Both SAKO company and its products are qualified for exports.SAKO has obtained ISO9001, ISO14001, OHAS18001, TUV, CE, CB, CQC certificates. We can also help customer apply PSI, COC, SONCAP, SASO, SABER,etc.

SAKO products are very popular because of their the stable quality, competitive price and good service. You are most welcome to be our agent in your region. We also welcome OEM / ODM orders. Whether selecting a current product from our catalog or seeking engineering assistance for your application, you can talk to our team about your sourcing requirements. Based on its rich experience, strong R&D, strict quality control systems, the spirit of creation, trust SAKO can offer you satisfied solar products and service.





ISO9001



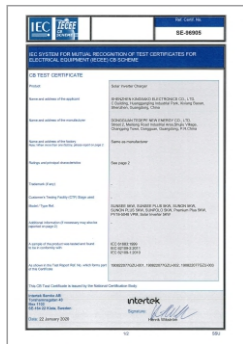
ISO14001



OHSAS18001



CE FOR INVERTER



CB FOR INVERTER



CB FOR LITHIUM BATTERY



MSDS



海運鉴定证书



CE FOR LITHIUM BATTERY



TUV FOR PANEL



CQC FOR PANEL (IEC61730)



CQC FOR PANEL (IEC61215)

A

● Lithium Iron Phosphate Battery

- Li-Wall Series High Quality Lithium- Battery Bank ----- 01-02
- 48V Storage system with Modular and-Stacked-Design ----- 03-04
- Li-Wall Series Lithium Iron Battery ----- 05-06
- Li-MAX Lithium Iron Battery for Lead-Acid Battery Replacement ----- 07-10
- Li-Eco series Lithium Iron Battery ----- 11-12
- Li-Power 48V 300Ah-600Ah Lithium Iron Battery ----- 13-14
- Li-Cube 4U Rack Mounted Lithium Iron Battery ----- 15-16
- Li-Power 192V/384V Lithium Iron Battery ----- 17-18
- Li-S Storage System With Lithium Battery ----- 19-20

B

● Solar Project for Reference

21-24

LI-WALL SERIES HIGH QUALITY LITHIUM BATTERY BANK 5 YEARS WARRANTY



MAIN FEATURES

- Top brand cell, grade A quality
- High density, small size and weight
- Cells cycle times 6000 cycles
- Long lifespan: 5 years warranty, 10+ life design
- Big discharge current, Suitable for solar system.
- Smart BMS system to optimize the performance
- Communication: RS485/CAN, compatible with different brand of solar inverter
- All around protection
- Power wall and 4U Rack mounted case design for optional
- Smart bms supports communication with different brand of hybrid inverter



TECHNICAL PARAMETER

MODEL	SK-51.2V100AH Li-Wall Series	SK-51.2V200AH Li-Wall Series
SPECIFICATION		
Battery Type	LiFePO4 (BYD/EVE Cell)	LiFePO4 (BYD/EVE Cell)
Normal Battery Model	51.2V100AH	51.2V200AH
Normal Capacity(25°C, 0.2C) (WH)	5120Wh	10.24KWh
Voltage window (Vdc)	44.8~58.4V	44.8~58.4V
Folat Charge Voltage(Vdc)	56.0V	56.0V
Max.continue discharge current (A)	50	100
Max.pulse discharge current (A)	150A 1Sec.	150A 1Sec.
Max.continue charge current (A)	50	100
Cycle life(+25°C 0.2C 100%DOD)	>6000 Cycles	>6000 Cycles
Cell Equalizer Current(A)	1~5A Max.	1~5A Max.
Terminal	M8	
Storage temperature	0°C~30°C	
Storage duration	6 months at 25°C	
Safety standard	UN38.3,MSDS,CE	
IP degree	IP20	
Communication function	RS485/CAN(Communication protocol supported inverter brand: Deye, Growatt, Voltroni, GOODWE, VICTRON, PYLONTEC, SMA, SOFAR)	
PROTECTION		
Protection	Overcharge protection、Overdischarge protection、Overcurrent protection、Shortcircuit protection、Overtemperature protection	
AMBIENT		
Noise(dB)	< 40dB (1 meter)	
working Temperature	-10°C~+50°C	
Humidity	0~95% (no condensation)	
Sea Level(m)	=1500	
DIMENSION		
L×W×H (products size) mm	L625*W455*H181mm	L837*W455*H181mm
L×W×H (package size) mm	L660*W490*H216mm	L872*W490*H216mm
Weight(NW Kg)	57.0Kg	101.0Kg
Weight(GW Kg)	60.0Kg	104.0Kg

48V Storage system with Modular and Stacked Design



MAIN FEATURES

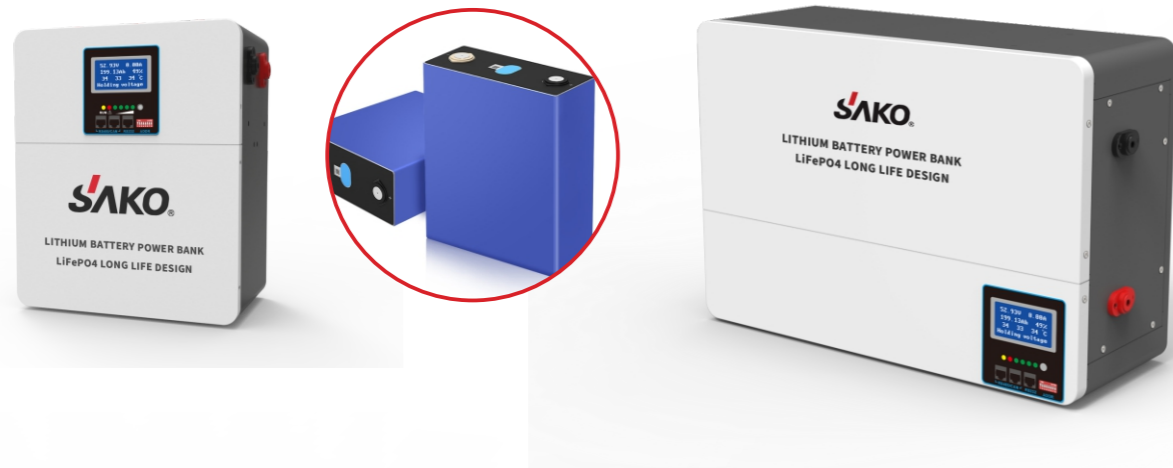
- Top brand cell, grade A quality
- High density, small size and weight
- Cells cycle times 6000 cycles
- Long lifespan: 5 years warranty, 10+ life design
- Big discharge current, Suitable for solar system.
- Smart BMS system to optimize the performance
- Communication: RS485/CAN, compatible with different brand of solar inverter
- All around protection
- 48V Storage system with Modular and Stacked Design
- Smart bms supports communication with different brand of hybrid inverter



TECHNICAL PARAMETER

MODEL	SK-51.2V100AH	SK-51.2V200AH	SK-51.2V300AH	SK-51.2V400AH
SPECIFICATION				
System Demo				
Battery Module	SK-51.2V100AH			
No. of Module	1	2	3	4
Normal Capacity(25°C, 0.2C) (WH)	5120Wh	10.24KWh	15.36KWh	20.48KWh
Battery Type	LiFePO4 (BYD Cell)	LiFePO4 (BYD Cell)	LiFePO4 (BYD Cell)	LiFePO4 (BYD Cell)
Voltage window (Vdc)	44.8~58.4V	44.8~58.4V	44.8~58.4V	44.8~58.4V
Folat Charge Voltage(Vdc)	56.0V	56.0V	56.0V	56.0V
Max.continue discharge current (A)	50	100	150	200
Max.pulse discharge current (A)	150A 1Sec.	300A 1Sec.	450A 1Sec.	600A 1Sec.
Max.continue charge current (A)	50	100	150	200
Cycle life(+25°C 0.2C 100%DOD)	>6000 Cycles	>6000 Cycles	>6000 Cycles	>6000 Cycles
Cell Equalizer Current(A)	1~5A Max.	1~5A Max.	1~5A Max.	1~5A Max.
Terminal	Double M8	Double M8	Double M8	Double M8
Storage temperature	0°C ~ 30°C			
Storage duration	6 months at 25°C			
Safety standard	UN38.3,MSDS,CE			
IP degree	IP20			
Communication function	RS485/CAN(Communication protocol supported inverter brand: Deye, Growatt, Voltronic, GOODWE, VICTRON, PYLONTEC, SMA, SOFAR)			
PROTECTION				
Protection	Overcharge protection、Overdischarge protection、Overcurrent protection、Shortcircuit protection、Overtemperature protection			
AMBIENT				
Noise(dB)	< 40dB (1 meter)			
working Temperature	-10°C ~ +50°C			
Humidity	0~95% (no condensation)			
Sea Level(m)	=1500			
DIMENSION				
L×W×H (products size) mm	L655*W452*H191mm	L655*W452*H428mm	L655*W422*H595mm	L655*W422*H761mm
Weight(NW Kg)	55.0Kg	118.0Kg	175.0Kg	228.0Kg

Li-Wall series Lithium Iron Battery Pack-Powerwall design



Main features

- ⊕ 24V, 48V LiFePO4 pack, superior safety and reliability
- ⊕ Top brand cell such as CATL, BYD or GOTION.
- ⊕ Cells cycles times: ≥ 3000 .
- ⊕ Long lifespan: 3 years warranty, 5+ years life design.
- ⊕ With intelligent BMS system to optimize the performance.
- ⊕ Built in 1.2A cell equalizer, can balance all cells in short time.
- ⊕ Max discharge current up to 200A, compatible with Solar system.
- ⊕ Excellent standby self-consumption as low as 4mA.
- ⊕ High density, small size and weight.
- ⊕ Wall mounted design, easy installation.
- ⊕ All around protection and unattended operation.
- ⊕ Optional for LCD display or communication (CAN/RS485/RS232).

TECHNICAL PARAMETER

MODEL	Li-Wall 12V200AH	Li-Wall 24V100AH	Li-Wall 24V200AH	Li-Wall 48V100AH	Li-Wall 48V200AH	Li-Wall 24V200AH	Li-Wall 48V200AH
SPECIFICATION							
Battery Type	LiFePO4						
Normal Battery Voltage(Vdc)	12.8V	25.6V	25.6V	51.2V	51.2V	25.6V	51.2V
Normal Capacity(25°C, 0.2C) (WH)	2560WH	2560WH	5120WH	5120WH	10240WH	5120WH	10240WH
Voltage window (Vdc)	11.2~14.6V	22.4~29.2V	22.4~29.2V	44.8~58.4V	44.8~58.4V	22.4~29.2V	44.8~58.4V
Folat Charge Voltage(Vdc)	13.8V	27.6V	27.6V	55.2V	55.2V	27.6V	55.2V
Max.continue discharge current (A)	150	100	150	100	150	150	150
Max.pulse discharge current (A)	200A 30Sec.	200A 30Sec.	200A 30Sec.	200A 30Sec.	200A 30Sec.	200A 30Sec.	200A 30Sec.
Max.continue charge current (A)	100	50	100	50	100	100	100
Case design	Powerwall design	Powerwall design	Powerwall design	Powerwall design	Powerwall design	Tower wall design	Tower wall design
Cycle life(+25°C 0.2C 80%DOD)	>3000 Cycles (Optional for >5000 cycles with 5 years warranty)						
Cell Equalizer Current(A)	1~5A Max.						
Terminal	M8						
Storage temperature	0°C~30°C						
Storage duration	6 months at 25°C						
Safety standard	UN38.3,IEC62619,MSDS,CE						
IP degree	IP20						
PROTECTION							
Protection	Overcharge protection, Overdischarge protection, Overcurrent protection, Shortcircuit protection, Overtemperature protection						
AMBIENT							
Noise(dB)	< 40dB (1 meter)						
working Temperature	-10°C~+50°C						
Humidity	0~95% (no condensation)						
Sea Level(m)	=1500						
DIMENSION							
L×W×H (products size) mm	L314*W218*H380	L314*W218*H380	L534*W385*H218	L534*W385*H218	L652*W521*H218	L485*W298*H503	L485*W298*H802
L×W×H (package size) mm	L395*W250*H442	L395*W250*H442	L611*W442*H250	L611*W442*H250	L722*W591*H280	L547*W315*H535	L545*W375*H854
Weight(NW Kg)	25.0Kg	25.0Kg	44.0Kg	44.0Kg	73.0Kg	76.0Kg	132.0Kg
Weight(GW Kg)	26.0Kg	26.0Kg	45.0Kg	45.0Kg	74.0Kg	78.0Kg	152.0Kg

Li-MAX Lithium Iron Battery Pack for Lead-Acid Battery Replacement

3 Years Warranty



Main features

- ⦿ 12V/24V/48V LiFePO4 pack, superior safety and reliability.
- ⦿ Top brand cell such as CATL, BYD.
- ⦿ Cells cycles times: \approx 3000 .
- ⦿ Long lifespan: 3 years warranty, 5+ years life design.
- ⦿ With intelligent BMS system to optimize the performance.
- ⦿ Built in 1.2A cell equalizer, can balance all cells in short time.
- ⚡ Max discharge current 6A-200A depends on different model, compatible with Solar system with big storage power.
- 🔒 Excellent standby self-consumption as low as 4mA.
- ⚖️ High density, small size and weight.
- 📦 With ABS case to replace lead acid battery.
- 🛡️ All around protection and unattended operation.
- 📺 Optional for LCD display or communication (CAN/RS485/RS232).

TECHNICAL PARAMETER

MODEL	Li-MAX-12V100AH	Li-MAX-12V200AH	Li-MAX-12V300AH	Li-MAX-12V400AH	Li-MAX-24V100AH	Li-MAX-24V150AH	Li-MAX-24V200AH	Li-MAX-48V100AH
SPECIFICATION								
Battery Type	LiFePO4							
Normal Battery Voltage(Vdc)	12.8V	12.8V	12.8V	12.8V	25.6V	25.6V	25.6V	51.2V
Normal Capacity(25°C, 0.2C) (WH)	1280WH	2560WH	3840WH	5120WH	2560WH	3840WH	5120WH	5120WH
Voltage window (Vdc)	11.2~14.6V	11.2~14.6V	11.2~14.6V	11.2~14.6V	22.4~29.2V	22.4~29.2V	22.4~29.2V	44.8~58.4V
Folat Charge Voltage(Vdc)	13.8V	13.8V	13.8V	13.8V	27.6V	27.6V	27.6V	55.2V
Max.continue discharge current (A)	100	200	200	200	100	150	200	100
Max.pulse discharge current (A)	200A 1Sec.	400A 1Sec.	400A 1Sec.	400A 1Sec.	200A 1Sec.	300A 1Sec.	400A 1Sec.	200A 1Sec.
Max.continue charge current (A)	50	100	150	200	50	75	100	50
Cycle life(+25°C 0.2C 80%DOD)	>3000 Cycles							
Cell Equalizer Current(A)	1~5A Max.							
Terminal	M8							
Storage temperature	0°C~30°C							
Storage duration	6 months at 25°C							
Safety standard	UN38.3,IEC62619,MSDS,CE							
IP degree	IP20							
PROTECTION								
Protection	Overcharge protection、Overdischarge protection、Overcurrent protection、Shortcircuit protection、Overtemperature protection							
AMBIENT								
Noise(dB)	< 40dB (1 meter)							
working Temperature	-10°C~+50°C							
Humidity	0~95% (no condensation)							
Sea Level(m)	=1500							
DIMENSION								
L×W×H (products size) mm	L256xW165x H210	L532xW207x H215	L521xW238x H218	L520xW267x H220	L532xW207x H215	L521xW238x H218	L520xW267x H220	L520xW267x H220
L×W×H (package size) mm	L276xW185x H230	L552xW227x H235	L541xW258x H238	L540xW287x H240	L552xW227x H235	L541xW258x H238	L540xW287x H240	L540xW287x H240
Weight(NW Kg)	12.5Kg	30.0Kg	34.0Kg	42.0Kg	30.0Kg	34.0Kg	42.0Kg	42.0Kg
Weight(GW Kg)	13.0Kg	31.0Kg	35.0Kg	43.0Kg	31.0Kg	35.0Kg	43.0Kg	43.0Kg

Li-Eco series Lithium Iron Battery Pack-Horizontal design



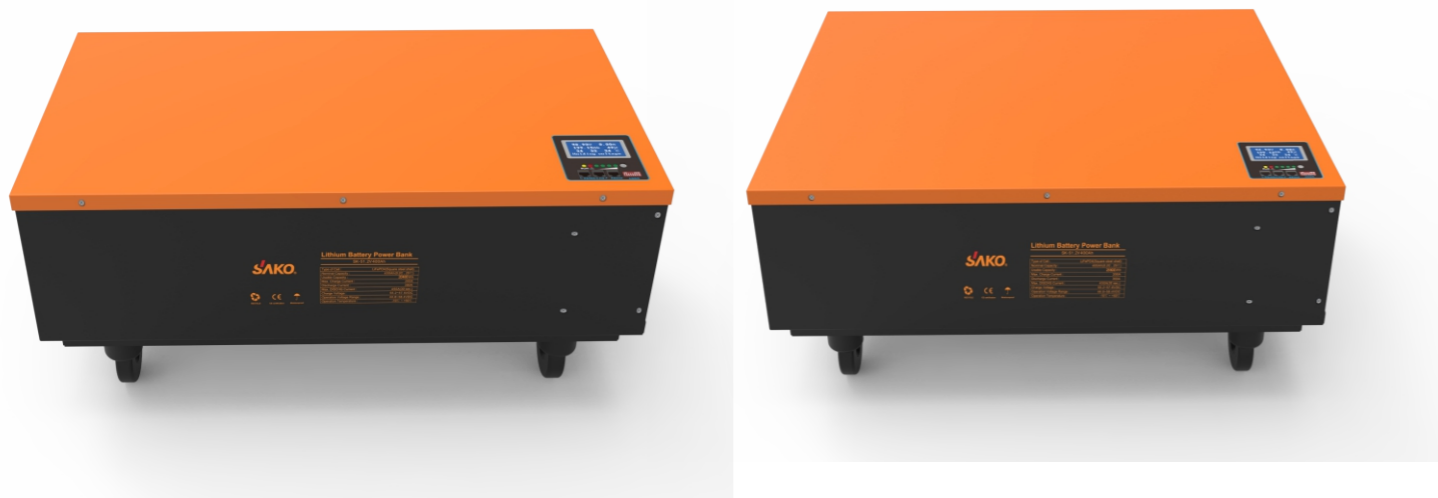
MAIN FEATURES

- ⊕ Affordable lithium battery with Lead acid battery price
- ⊕ 12V,24V, 48V LiFePO4 pack, safe and reliable
- ⌚ 2 years warranty, 5 years life design, stable quality and excellent performance
- Ⓜ Built in smart BMS system to optimize the performance
- ⊕ With 1.2A cell equalizer, can balance all cells in short time
- ⚡ Max discharge current up to 150A, compatible with Solar system
- Ⓜ Excellent standby self-consumption as low as 4mA
- Ⓜ All around protection and unattended Operation
- Ⓜ Optional for LCD display or communication (CAN/RS485/RS232)

TECHNICAL PARAMETER

MODEL	Li-Eco 12V200AH (C)	Li-Eco 12V200AH (B)	Li-Eco 24V100AH	Li-Eco 24V200AH	Li-Wall 48V200AH
SPECIFICATION					
Battery Type	LiFePO4				
Normal Battery Voltage(Vdc)	12.8V	12.8V	25.6V	25.6V	51.2V
Normal Capacity(25℃, 0.2C (WH)	2560WH	2560WH	2560WH	5120WH	10240WH
Voltage window (Vdc)	11.2~14.6V	11.2~14.6V	22.4~29.2V	22.4~29.2V	44.8~58.4V
Folat Charge Voltage(Vdc)	13.8V	13.8V	27.6V	27.6V	55.2V
Max.continue discharge current (A)	100	100	100	100	100
Max.pulse discharge current (A)	150A 1Sec.	150A 1Sec.	150A 1Sec.	150A 1Sec.	150A 1Sec.
Max.continue charge current (A)	100	100	50	100	100
LiFePO 4 cell type	CATL Module	BYD Module	CATL Module	BYD Module	BYD Module
Cycle life(+25℃ 0.2C 80%DOD)	> 1500 Cycles				
Cell Equalizer Current(A)	1~5A Max.				
Terminal	M8				
Storage temperature	0℃~30℃				
Storage duration	6 months at 25℃				
Safety standard	UN38.3,IEC62619,MSDS,CE				
IP degree	IP20				
PROTECTION					
Protection	Overcharge protection、Overdischarge protection、Overcurrent protection、Shortcircuit protection、Overtemperature protection				
AMBIENT					
Noise(dB)	< 40dB (1 meter)				
working Temperature	-10℃~+50℃				
Humidity	0~95% (no condensation)				
Sea Level(m)	=1500				
DIMENSION					
L×W×H (products size) mm	L547*W202*H220	L572*W268*H183	L547*W202*H220	L566*W322*H291	L778*W453*H363
L×W×H (package size) mm	L586*W214*H239	L593*W282*H201	L586*W214*H239	L585*W334*H310	L860*W565*H550
Weight(NW Kg)	31.0Kg	31.5Kg	31.0Kg	61.0Kg	132.0Kg
Weight(GW Kg)	32.0Kg	32.5Kg	32.0Kg	62.5Kg	152.0Kg

Li-Power 48V 300Ah-600Ah Lithium Iron Battery Pack 15KWH / 20KWH / 25KWH / 30KWH



Main features

- ⚡ 48V LiFePO4 pack, superior safety and reliability.
- ⚙️ Top brand cell such as CATL, BYD.
- 🕒 Cells cycles times: \approx 3000 .
- 🕒 Long lifespan: 3 years warranty, 5+ years life design.
- 🧠 With intelligent BMS system to optimize the performance.
- ⚙️ Built in 1.2A cell equalizer, can balance all cells in short time.
- ⚡ Max discharge current up to 300A, compatible with Solar system with big storage power.
- 🔒 Excellent standby self-consumption as low as 4mA.
- 📦 High density, small size and weight.
- 📏 Horizontal design.
- 🛡️ All around protection and unattended operation.
- 📺 Optional for LCD display or communication (CAN/RS485/RS232).

TECHNICAL PARAMETER

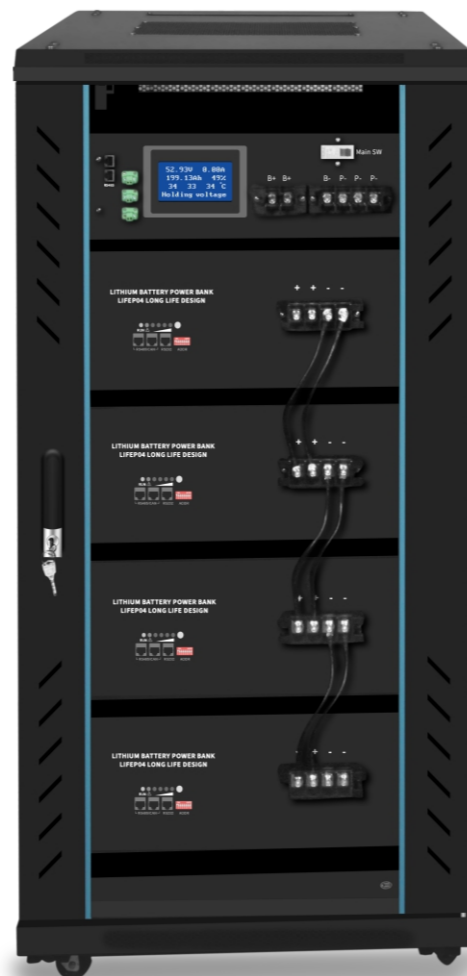
MODEL	Li-Power-48V300AH	Li-Power-48V400AH	Li-Power-48V500AH	Li-Power-48V600AH
SPECIFICATION				
Battery Type	LiFePO4			
Normal Battery Voltage(Vdc)	51.2V	51.2V	51.2V	51.2V
Normal Capacity(25°C, 0.2C) (WH)	15.36KWH	20.48KWH	25.6KWH	30.72KWH
Voltage window (Vdc)	44.8~58.4V	44.8~58.4V	44.8~58.4V	44.8~58.4V
Folat Charge Voltage(Vdc)	55.2V	55.2V	55.2V	55.2V
Max.continue discharge current (A)	300	300	300	300
Max.pulse discharge current (A)	450A 30Sec.	450A 30Sec.	450A 30Sec.	450A 30Sec.
Max.continue charge current (A)	150	200	250	300
Cycle life(+25°C 0.2C 80%DOD)	>3000 Cycles (Optional for cell cycle time >5000, 5 years warranty)			
Cell Equalizer Current(A)	1~5A Max.			
Terminal	Double M8			
Storage temperature	0°C~30°C			
Storage duration	6 months at 25°C			
Safety standard	UN38.3,IEC62619,MSDS,CE			
IP degree	IP20			
PROTECTION				
Protection	Overcharge protection、Overdischarge protection、Overcurrent protection、Shortcircuit protection、Overtemperature protection			
AMBIENT				
Noise(dB)	< 40dB (1 meter)			
working Temperature	-10°C~+50°C			
Humidity	0~95% (no condensation)			
Sea Level(m)	=1500			
DIMENSION				
L×W×H (products size) mm	L835*W466*H385	L835*W483*H390	L835*W718*H390	L835*W718*H390
L×W×H (package size) mm	L946*W578*H577	L946*W595*H577	L946*W595*H577	L946*W595*H577
Weight(NW Kg)	145.0Kg	171.0Kg	210.0Kg	248.0Kg
Weight(GW Kg)	165.0Kg	191.0Kg	230.0Kg	268.0Kg

Li-Cube 4U Rack Mounted Lithium Iron Battery Pack 3 Years Warranty



MAIN FEATURES

- Top brand cells
- 4U Rack design
- Long lifespan
- Smart BMS system inside
- Built in 1.2A cell equalizer
- Max discharge current up to 100A
- High density, small size and weight
- Optional for LCD display or communication (CAN/RS485/RS232)



TECHNICAL PARAMETER

MODEL	Li-Cube-48V100AH	Li-Cube-48V150AH	Li-Cube-48V200AH
SPECIFICATION			
Battery Type	LiFePO4		
Normal Battery Voltage(Vdc)	51.2V	51.2V	51.2V
Normal Capacity(25°C, 0.2C) (WH)	5120WH	7680WH	10240WH
Voltage window (Vdc)	44.8~58.4V	44.8~58.4V	44.8~58.4V
Folat Charge Voltage(Vdc)	55.2V	55.2V	55.2V
Max.continue discharge current (A)	100	150	150
Max.pulse discharge current (A)	200A 30Sec.	200A 30Sec.	200A 30Sec.
Max.continue charge current (A)	50	75	100
Cycle life(+25°C 0.2C 80%DOD)	>3000 Cycles		
Cell Equalizer Current(A)	1~5A Max.		
Terminal	M6		
Storage temperature	0°C~30°C		
Storage duration	6 months at 25°C		
Safety standard	UN38.3,IEC62619,MSDS,CE		
IP degree	IP20		
PROTECTION			
Protection	Overcharge protection、 Overdischarge protection、 Overcurrent protection、 Shortcircuit protection、 Overtemperature protection		
AMBIENT			
Noise(dB)	< 40dB (1 meter)		
working Temperature	-10°C~+50°C		
Humidity	0~95% (no condensation)		
Sea Level(m)	=1500		
DIMENSION			
L×W×H (products size) mm	L475*W440*H176mm	L535*W440*H176mm	L590*W483*H178mm
L×W×H (package size) mm	L562*W552*H238mm	L624*W552*H238mm	L638*W552*H238mm
Weight(NW Kg)	42.0Kg	56.0Kg	73.0Kg
Weight(GW Kg)	43.0Kg	57.0Kg	74.0Kg

Li-Power 192V/384V Lithium Battery Bank For Big storage System



Main Features:

- Adopted standard 4U LiFePO4 pack.
- Superior safety and reliability.
- Top brand cell such as CATL or BYD.
- Longer lifespans with cells cycles times ≥ 3000 .
- Smart 4U BMS control system, support parameter setting.
- Built in cell equalizer.
- Advanced 7" display, touchscreen.
- Max discharge current up to 200A, compatible with solar system
- CAN/RS485/RS232 communication optional
- Optional for built-in MPPT solar charger, rack module design for solar system
- Optional for dry contact function for generator /grid input/inverter start-up and stop

TECHNICAL PARAMETER

MODEL	Li-S 192V/ 20KWh	Li-S 192V/ 30KWh	Li-S 192V/ 40KWh	Li-S 384V/100KWh	Li-S 384V/200KWh	Li-S 384V/300KWh	Li-S 384V/400KWh	Li-S 384V/500KWh
Battery Type	LiFePO4							
Normal Battery Voltage(Vdc)	384Vdc							
Normal Capacity (25°C 0.2C)	20KWh	30KWh	40KWh	100KWh	200KWh	300KWh	400KWh	500KWh
Operation Voltage range (Vdc)	179.2~230.4V			336.0~438.0V				
Max Continuous Discharge Current(A)	100A	150A	150A	200A	200A	200A	400A	400A
Max Pulse Discharge Current(A)	200A 30Sec.			300A 30Sec.	300A 30Sec.	300A 30Sec.	600A 30Sec.	600A 30Sec.
Max Continuous Charge Current(A)	100A	150A	150A	135A	200A	200A	400A	400A
Cycle life (25°C, 0.2C)	≥ 3000 Cycles (for 3 years warranty, 5-8 years life design)							
Cell Equalizer Current(A)	1~5A Max.							
Terminal	Double M6							
Storage temperature	0°C~30°C							
IP degree	IP 20							
Storage duration	6 months at 25°C							
Display	7 inch touchscreen display							
Communication	CAN/RS485/RS232 (Optional)							
Built in BMS Control System	1pcs*4U BMS Control System					2pcs*4U BMS Control System		
Built in MPPT Solar Charger (Optional)	192V 30A-100A MPPT Rack Module , Size:440*475*150mm			384V-60A MPPT Rack Module , Size:440*475*150mm				
PROTECTION								
Protection	Overcharge/Overdischarge/Overcurrent/Shortcircuit /Overtemperature protection							
AMBIENT								
working Temperature	-10°C~+50°C							
Humidity	0~95% (no condensation)							
Sea Level(m)	=1500							
DIMENSION								
L×W×H (products size)	W588*D600*H1215*1set	588*570*1950*3set	588*570*1950*6set	588*570*1950*9set	588*570*1950*12set	588*570*1950*15set		
L×W×H (package size)	W730*D750*H14156*1set	703*685*2135*3set	703*685*2135*6set	703*685*2135*9set	703*685*2135*12set	703*685*2135*15set		
Net Weight (N.W. Kgs)	220Kg	280Kg	300Kg	1350Kg	2700Kg	4050Kg	5400Kg	6750Kg
Gross Weight (G.W Kgs)	250Kg	310Kg	330Kg	1425Kg	2850Kg	4275Kg	5700Kg	7125Kg

Li-S 3.5KW/5.5KW Storage Solar System With Lithium Battery



Main Features

- All-in-one system: Inverter/AC charger/Solar Charger/Lithium battery 4 in 1, just solar panel outside, easy for installation
- MPPT solar charger built inside, high charging efficiency
- Smart BMS management system inside
- Built-in maximum 5A lithium cell equalizer
- LiFePO 4 Cell up to 2000 times charge/discharge cycles life
- With all around protection
- Application for off-grid solar power system



TECHNICAL PARAMETER

SPECIFICATION	MODEL	Li-S 3.5KW/5.12KWh Storage Solar System	Li-S 5.5KW/10.24KWH Storage Solar System
Inverter / Charger			
Inverter Type		SUNON PRO 3.5KW/24V	SUNON PRO 5.5KW/48V
Rated Output Power		3.5KW	5.5KW
Output Voltage Waveform		Pure Sine Wave	Pure Sine Wave
Output Voltage		230VAC 50HZ	230VAC 50HZ
Low DC Cut-off Voltage		22.4Vdc	44.8Vdc
Charging Current(Utility and solar together)		100A Max.	100A Max.
Bulk Charging Voltage		28.8Vdc	57.6Vdc
Float Charging Voltage		28.0Vdc	56.0Vdc
AC Input			
Nominal Input Voltage		230Vac	230Vac
Selectable Voltage Range		170-280 (UPS), 90-280 (Appliance)	170-280 (UPS), 90-280 (Appliance)
Frequency		50HZ / 60HZ(Auto detection)	50HZ / 60HZ(Auto detection)
AC Charging Current		80A Max.	80A Max.
Solar Input			
Nominal PV Voltage		360Vdc	360Vdc
PV Array MPPT Voltage Range		120Vdc~450Vdc	120Vdc~450Vdc
Max. PV Array Open Circuit Voltage		500Vdc	500Vdc
Solar Charging Current		100A Max.	100A Max.
Lithium Iron Battery			
Nominal Battery Voltage		25.6Vdc	51.2Vdc
Nominal Capacity		200Ah	200Ah
Max.Charge Current		100A	100A
Max.Discharge Current		150A	150A
Operation Voltage Range		22.4Vdc~29.2Vdc	44.8Vdc~58.4Vdc
Cell Equalizer Current(A)		1~5A Max.	1~5A Max.
Protection			
Protection		Overcharge/Overdischarge/Overcurrent/Shortcircuit/Overtemperature protection	
Ambient			
Noise(dB)		< 40dB (1 meter)	
Humidity		0~95% (no condensation)	
Operation Temperature		-10℃~+50℃	-10℃~+50℃
Sea Level(m)		=1500	
Dimension			
L×W×H (products size)		L739*W223*H787mm	L739*W223*H787mm
L×W×H (package size)		L789*W273*H837mm	L789*W273*H837mm
Weight(Kg)		N.W.:68.0Kg, G.W.: 70KGS	N.W.:95.5Kg, G.W.:97.5KGS

AC SOLAR POWER SYSTEM PROJECT IN NIGERIA



50,000SETS SAKO SOLAR CONTROL INVERTERS INTEGRATED MACHINE TO LIGHT THE TIBET RESIDENTS.



DC SOLAR POWER SYSTEM PROJECT IN PAKISTAN



SAKO can offer large-scale centralized 3phase energy storage solution



2015-2017, 30KW SOLAR PUMPING SYSTEM IN YEMEN



HOME SOLAR SYSTEM INSTALLATION IN MIDDLE EAST



Lithium Battery Storage Solar System in South Africa



THE SOLAR POWER SYSTEM FOR HOME USE IN ARGENTINA

